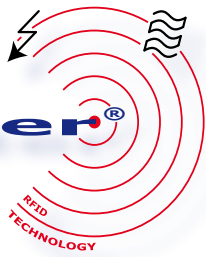


# TagMeter® Systems



In situations where meter and electronics can not be combined, for instance the meter is placed below ground level, split metering can be a solution. In this case the electronics are placed in the house and mounted against a wall. A cable is connected between meter and the electronics.

An advantage of split metering is that you can make use of the mains supply in stead of the battery pack. The batteries are used as a backup if mains power fails. In this case the batteries last for eighty days when the GSM/GPRS module is online 24 hours per day.

A sensor circuit continuously checks if the cable is still connected between meter and electronics. If not than the valve is closed automatically and the meter is put into Tamper mode. Only special ServiceTags can get the meter out of this mode.

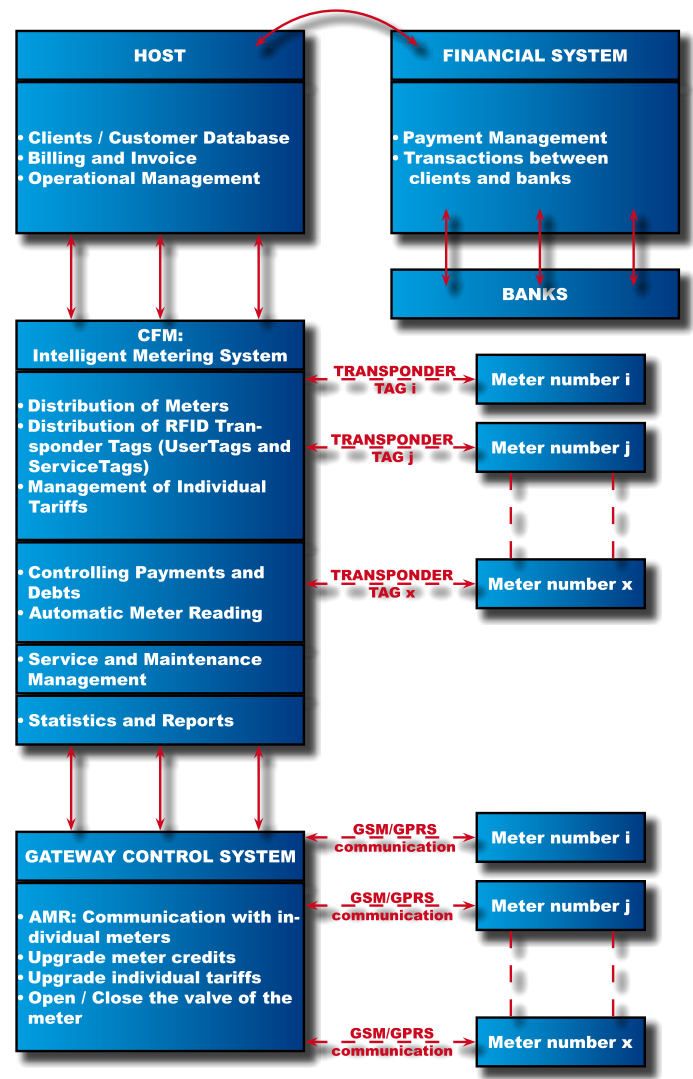
**NEW:** Now also a wireless connection between meter and electronics is available, using IEEE802.15.4 protocol. Also a Mini Hydro Generator is available.

Split Metering / AMR / AMM / M2M

**A**MR, AMM and M2M is implemented more and more nowadays. Besides reading out meter data, there is a growing demand for actual controlling meters. We call this system Automatic Meter Management. Using a built-in GSM/GPRS module, commands are received from a Gateway, and the meter responds with a message back.

With Automatic Meter Management you can do the following actions:

- Open or Close the valve of the meter; the meter opens or closes the integrated valve or external valve (bulk metering) and puts the meter into Service Mode. The meter is locked for UserTags.
- Upgrade the credits or balance of the meter
- Read out credits or balance and totalizer of the meter
- Release meter from Service Mode; the meter is accepting UserTags again and if there are remaining credits than the valve opens.
- Status of the valve (open or closed)
- Out of credits or balance



Payment of credits is possible using either our flexible Management Software or an Internet site with the standard methods of payment available. The Bank confirms the received payment and is informing the Gateway, which is converting the payment into credits of water. The Gateway sends a message to the appropriate meter and the meter sends back a confirmation that credits have been upgraded.

## TAMPER AND FRAUD PROOF

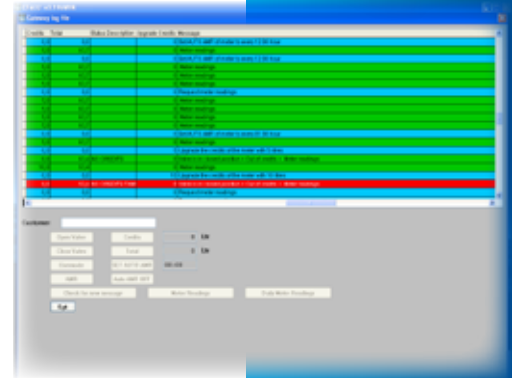
To protect the meter, the system has to be tamper proof. Therefore the meter is equipped with several sensors which put the meter into Tamper mode in the following conditions:

- Cable is cut or removed
- Enclosure of the meter is opened
- Enclosure of the electronics is opened
- Removal of the electronics from the wall
- External applied strong electromagnetic fields

**NEW:** Now also a wireless connection between meter and electronics is available, using IEEE802.15.4 protocol. Also a Mini Hydro Generator is available.

To reset the meter from Tamper mode, special ServiceTags are needed. Each time the meter sends a message to the Gateway module, at least the meter readings, power supply and status of the valve are submitted.

**TagMeter**  
Systems



## BENEFITS OF AMR/AMM/M2M

- No need for human meter readers
- Up-to-date meter readings;
- Control your meter; Disconnecting and Reconnecting meter not needed any more, just open or close the valve of the meter
- Generate and be in control of your cashflow
- Can be used for domestic meters and bulk or industrial meters
- In areas where water is scarce, you can limit(!) the usage of water
- Shut off water provision in area(s) in situations of calamities or in cases where contamination of the drinking water is detected

## CONTACT DETAILS

### CONTACT DETAILS

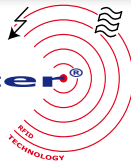
TagMeter Systems is a fast growing consortium with worldwide several production plants, local assembly plants, representatives, agents and partners worldwide. This is the way to guarantee that our products, sales, after-sales and commitment are secured at high standards.

Our proven references may confirm this.

Our own software departments are willing and able to implement tailor-made solutions and products.

Before installing a system we provide training and workshops to make sure that the product wanted is implemented the way you want.

**TagMeter**  
Systems



### PRODUCTION PLANT

TagMeter Systems  
info@tagmeter.com  
sales@tagmeter.com

## PARTNERS / AGENCIES / REPRESENTATIVES